

MOUNT BLANC

BRACKET LAMP

MODEL 1,2,3



NATURAL WHITE



ECRU

MODEL 1,2,3



POLISHED BRASS

MODEL 1,2



BLACK GLOSS

MODEL 3



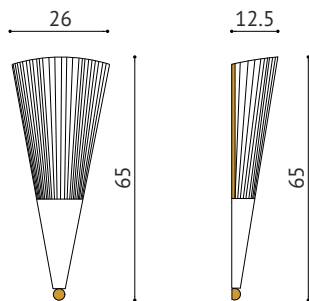
SALT PEPPER



CAMEL

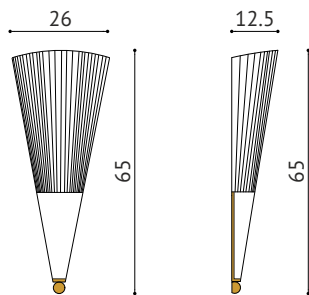
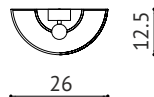


DARK ELEPHANT



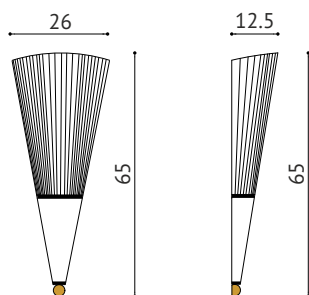
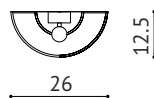
MODEL 1:

frustum of a cone, glossy black with a polished-brass ball + ribbon-covered lampshade with brass slats on side rims.



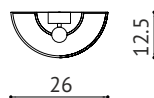
MODEL 2:

frustum of a cone glossy black with a brass rim let into three edges of the cone + polished-brass ball + ribbon covered lampshade



MODEL 3:

frustum of a cone, partly varnished glossy black (lower and upper surface and the back), the center filled with natural leather in three possible colors) + a polished-brass ball + ribbon covered lampshade



DESCRIPTION:

The MOUNT BLANC bracket lamp consists of the lampshade made of italian ribbon connected with the base in the shape of frustum of a cone. The base is made of solid chunk of wood varnished in gloss black color. The lamp base is finished with a decorative brass ball. Wall handle necessary for assembling the lamp has a white-color finish.

Interesting, fan-like shape makes the lamp suitable both for the interiors of houses (bedroom, living room, bathroom, hallway) and for hotel interiors.

MATERIALS:

- lampshade - ribbon (VERSION I: with a polished-slats finish)
- base - solid wood either varnished gloss black or partly coated with natural leather
- the ball and side slats - polished brass

AVAILABLE COLORS:

- colors of ribbon: natural white, ecru (as in the picture)
- leather colors, salt pepper, camel, dark elephant
- ball and side slats - polished brass

AVAILABLE SIZES:

- hight/width/depth: 65cm, 26cm, 12,5cm

REMARKS:

- source of light 1 x E14
- power 1 x max. 11W LED
- ingress protection IP20

**Data contained on the website is solely for commercial information and does not constitute the offer in accordance with art. 66, paragraph 1 of the Civil Code. We encourage You to contact us in regard to individual price evaluations.*